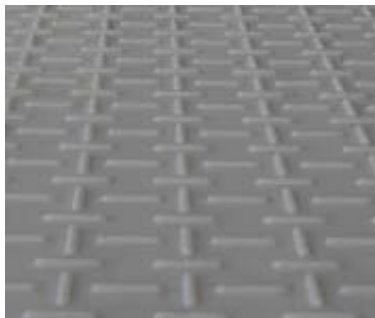


Heavy Duty Temporary Access Mat

General Description



Key Information

- High pressure compression moulded in one piece
- Quality batch control / mat identification
- 23 x 1200 x 2410mm
- Weight: c. 37kg (manhandable)
- Materials: choice of (a) Mix of HD / LDPE regenerated (b) HD / LDPE virgin / natural or green / UV protection
- Two traction surfaces – vehicular and pedestrian
- Connection holes / cut out hand holds

Vehicular Traction Surface

- Rugged raised surface profile for excellent traction for light to heavy (80 tonnes) vehicles, plant and machinery
- Sand blasted finish for micro-traction
- Low trip hazard
- Chevron pattern for high visibility strips

Pedestrian/Tire Traction Surface

- Uniform raised surface profile pattern for pedestrian use
- Good traction for vehicular use
- Sand blasted finish for micro-traction
- Low trip hazard (hand cut outs blanked off on pedestrian surface)

Connection

- 2-way and 4-way bolt in connectors
- 'Quick fit' metal connectors for fast turnaround
- Flexible webbing / anchor plate connectors
- U-pins for stability on sideways ground
- High visibility colour options

www.ltlutilitysupply.com

Heavy Duty Temporary Access Mat

Mechanical Testing of HD/LDPE Regenerated Material

Factor	Value
Tensile Strength (MPa)	23 - 26
Flexural Strength (MPa)	25 - 28
Flexular Modulus (MPa)	1936 – 1967
Charpy Notched Impact Strength (kJ/m ²)	5 - 6
Poisson's Ratio (theoretical)	0.35 – 0.38
Compression testing – maximum value reached before test terminated (tonnes)*	250

*Refers to the material strength on a firm substrate as tested by the National Physical Laboratory. The weight load distribution performance is subject to ground conditions. Lineman's Testing Laboratories, its agents or employees are not liable for any damage to existing ground or property through the use of this mat. The information provided is for guidance only. In all cases, qualified engineering / geotechnical advise should be sought regarding bearing capacity of the ground where the mat is to be used.

Generic Properties of HDPE and LDPE

Properties:		Resistance to Chemicals	
<ul style="list-style-type: none"> low density high toughness (LDPE provides flexibility) high elongation very good electrical and dielectric properties very low water absorption low steam permeability high chemical resistance good protection against stress cracking 		<ul style="list-style-type: none"> Dilute Acid **** Dilute Alkalis **** Oils and Greases ** variable Aliphatic Hydrocarbons * Aromatic Hydrocarbons * Halogenated Hydrocarbons * Alcohols **** 	
		Key: * poor ** moderate *** good **** very good	
Factor	HDPE Value	LDPE Value	Unit
Thermal expansion	110 - 130	150 - 200	e-6/K
Thermal conductivity	0.46 - 0.52	0.3 – 0.33	W/m.K
Specific heat	1800 - 2700	1800 - 3400	J/kg.K
Melting temperature	108 - 134	125 - 136	°C
Glass temperature	-110 - -110	-110 - -110	°C
Service temperature	-30 - 85	-30 - 70	°C
Density	940 - 965	910 - 928	kg/m ³
Resistivity	5e+17 - 1e+21	5e+17 – 1e+21	Ohm.mm ² /m
Breakdown potential	17.7 - 19.7	17.7 – 39.4	kV/mm
Dielectric loss factor	0.0005 - 0.0008	0.0002 – 0.001	
Friction coefficient	0.25 - 0.3	0.3 – 0.5	
Refraction index	1.52 - 1.53	1.51 – 1.53	
Shrinkage	2 - 4	1.5 - 3	%
Water absorption	0.01 – 0.01	0.005 0 0.015	%

www.ltlutilitysupply.com



UTILITY SUPPLY
DIV OF LINEMAN'S TESTING LABORATORIES OF CANADA
TRUSTED SINCE 1958



For product information and ordering, please call your local branch:
ON, QC & Maritime Provinces: 800-299-9769
AB, SK, MB, Northern Territories: 800-530-8640
British Columbia: 866-347-6911