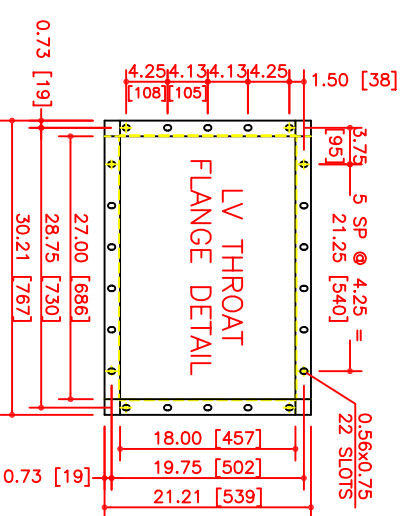
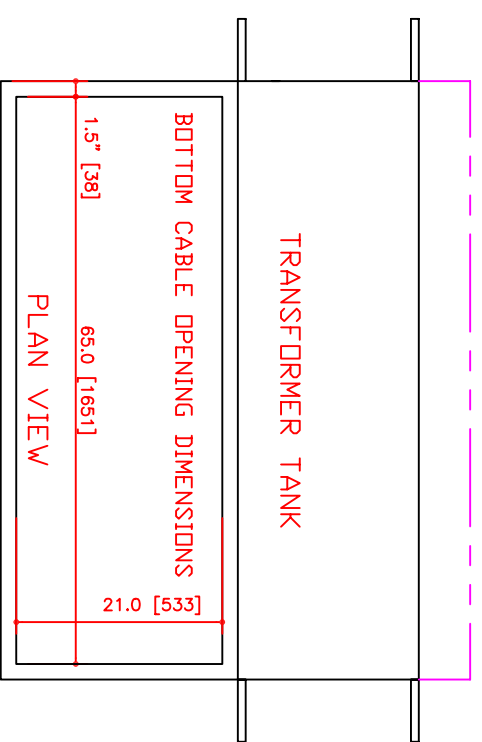
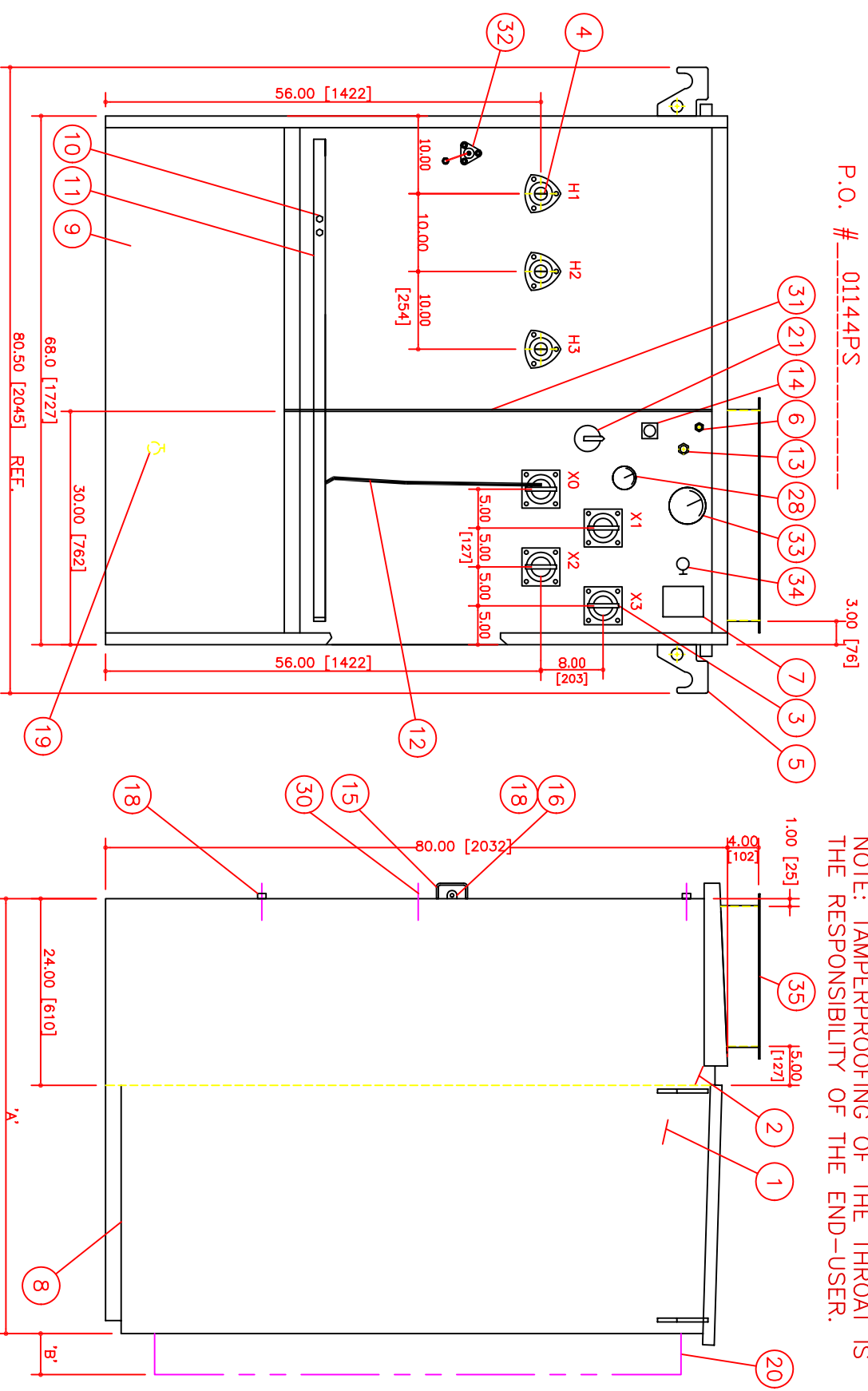


S.O.#	KVA	TOTAL MASS LBS. [KG.]	OIL QTY. GALS (L)	RAD SECS.	'A' IN (MM)	'B' IN (MM)
8904-8907	3750	20500 [9318]	6.75 [3069]	72	70.5 [1791]	39.0 [991]



P.O. # 01144PS

NOTE: TAMPERPROOFING OF THE THROAT IS THE RESPONSIBILITY OF THE END-USER.



ITEM	DESCRIPTION	REVISIONS
1	TRANSFORMER TANK	1-ADDED ITEM 35 AND FLANGE DETAIL. FEB21/01 LB
2	CABLE COMPARTMENT	
3	LV BUSHING - 8 HOLE SPADE	
4	HV BUSHING - 2 HOLE SPADE - 150 KV BIL	
5	LIFTING LUG	
6	PRESSURE RELIEF DEVICE	
7	NAMEPLATE	
8	JACKING AREA	
9	REMOVABLE SILL	
10	GROUNDING SPADE TERMINAL	
11	GROUNDING BUS BAR	
12	GROUNDING STRAP	
13	OIL FILL PLUG	
14	OIL LEVEL GAUGE	
15	DOOR HANDLE	
16	BRACKET FOR PADLOCK	
17		
18	1/2" PENTAHEAD BOLT & CUPWASHER [3]	
19	OIL DRAIN VALVE C/W SAMPLER	
20	SUPPLEMENTAL COOLING	
21	TAP SWITCH (PADLOCKABLE)	
22		
23		
24		
25		
26		
27		
28	THERMOMETER C/W DRAGHAND	
29		
30	HV DOOR LOCKING BOLT	
31	HV/LV BARRIER	
32	STATIC SHIELD BUSHING	
33	PRESSURE VACUUM GAUGE	
34	GAS SAMPLE VALVE	
35	LV THROAT (18 X 27 OPENING)	

Spec: C227.2/C227.4

Title: CARTE International Inc. Winnipeg, Canada

Live Front Radial Feed
3 Phase Transformer

Finish: EQUIPMENT GREEN

Drawn/Reviewed/Approved By: ANS
Date: 01/02/09

Scale: NTS PR B0731 B 00